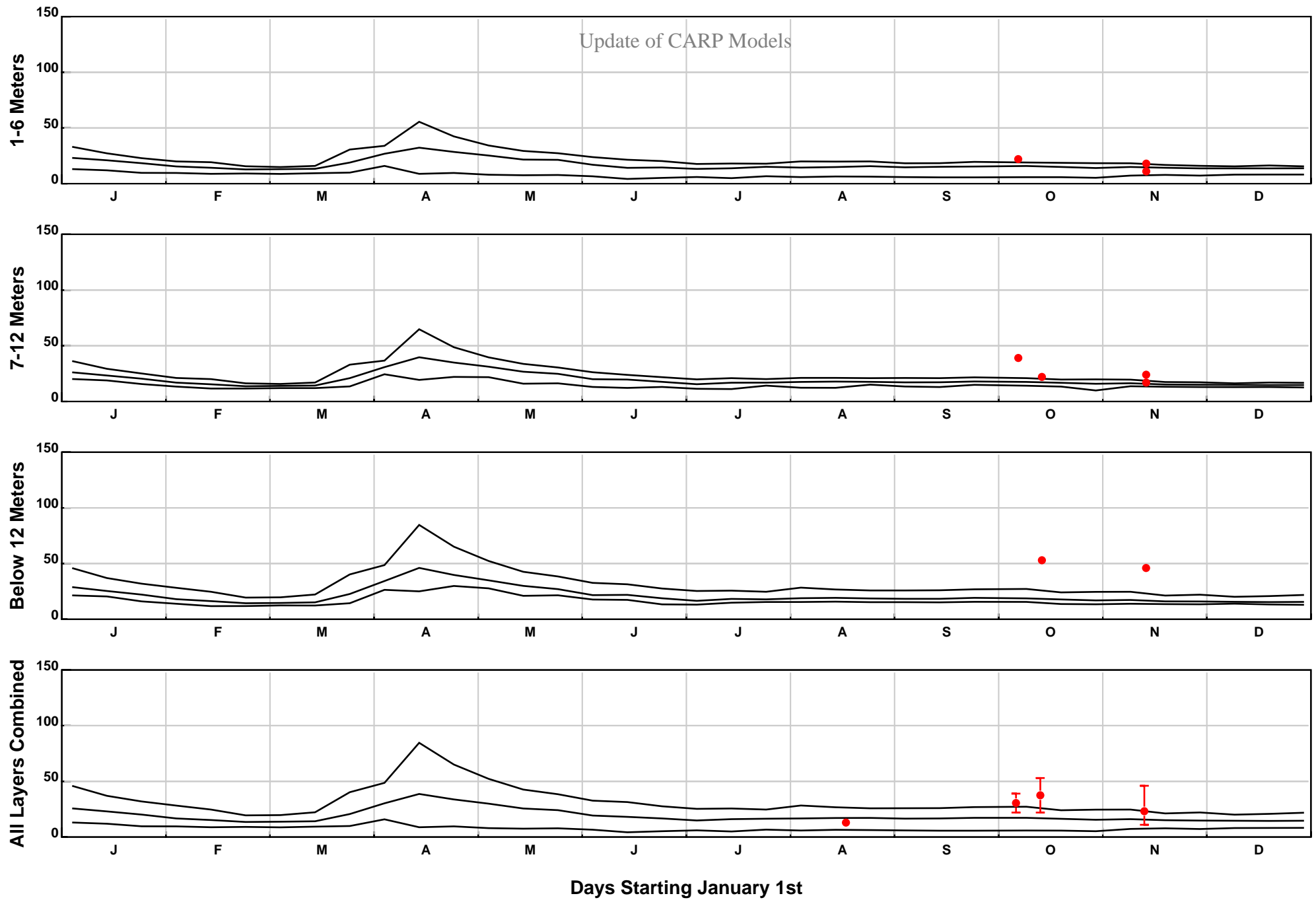


APPENDIX 10

Suspended Sediment Concentrations Model and Measurement Comparisons Results Diagrams, USGS Hudson River at Poughkeepsie Station, 2001-16 Calendar Years

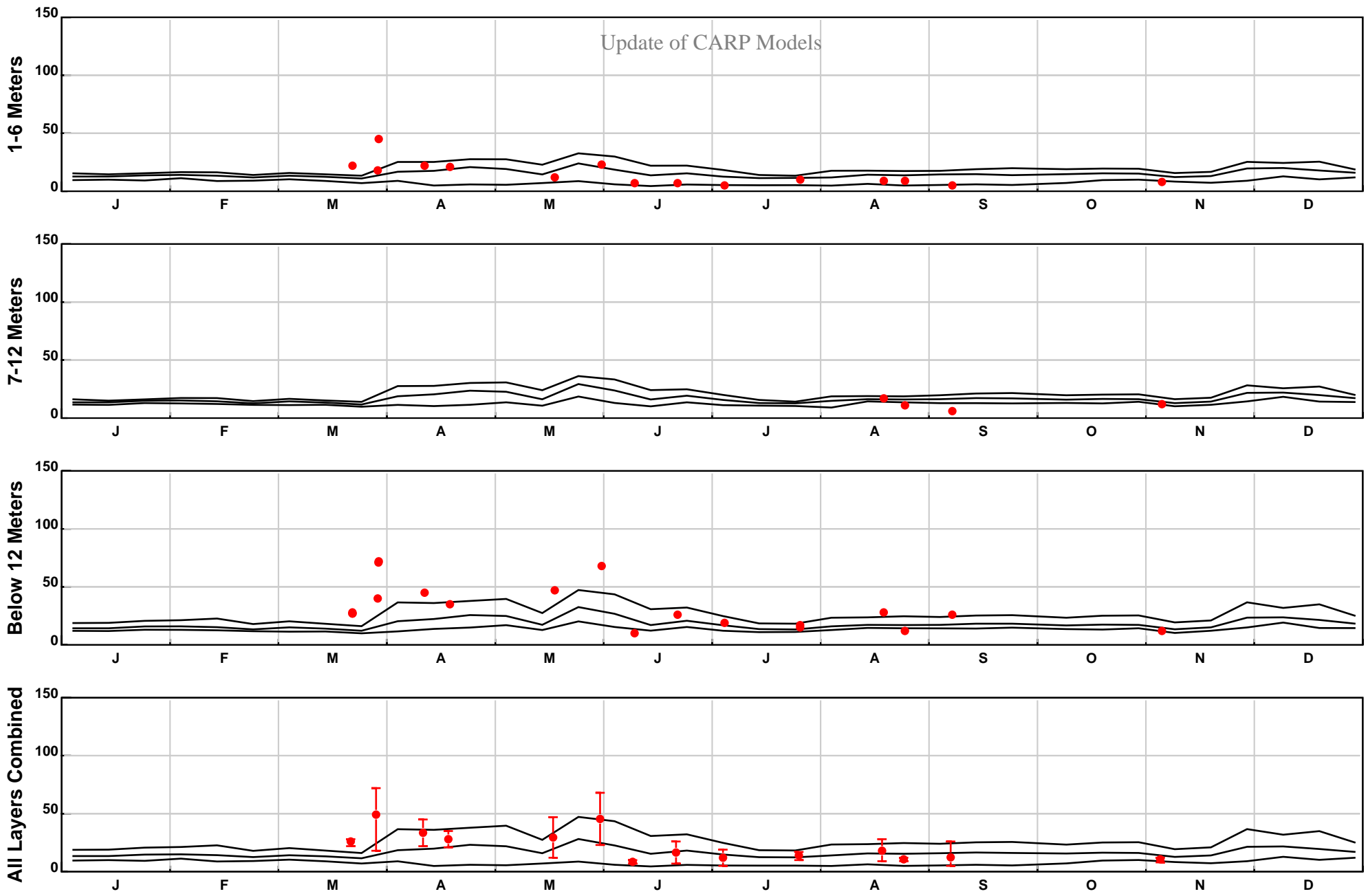
Update of CARP Models



ST-SWEM Suspended Sediment Concentrations (mg/L), Cell (41,178), Year 2001
Model and data comparison - suspended sediment concentrations on the Hudson River near Poughkeepsie
USGS 01372058

Appendix 10 Page 2 of 17
RUN24

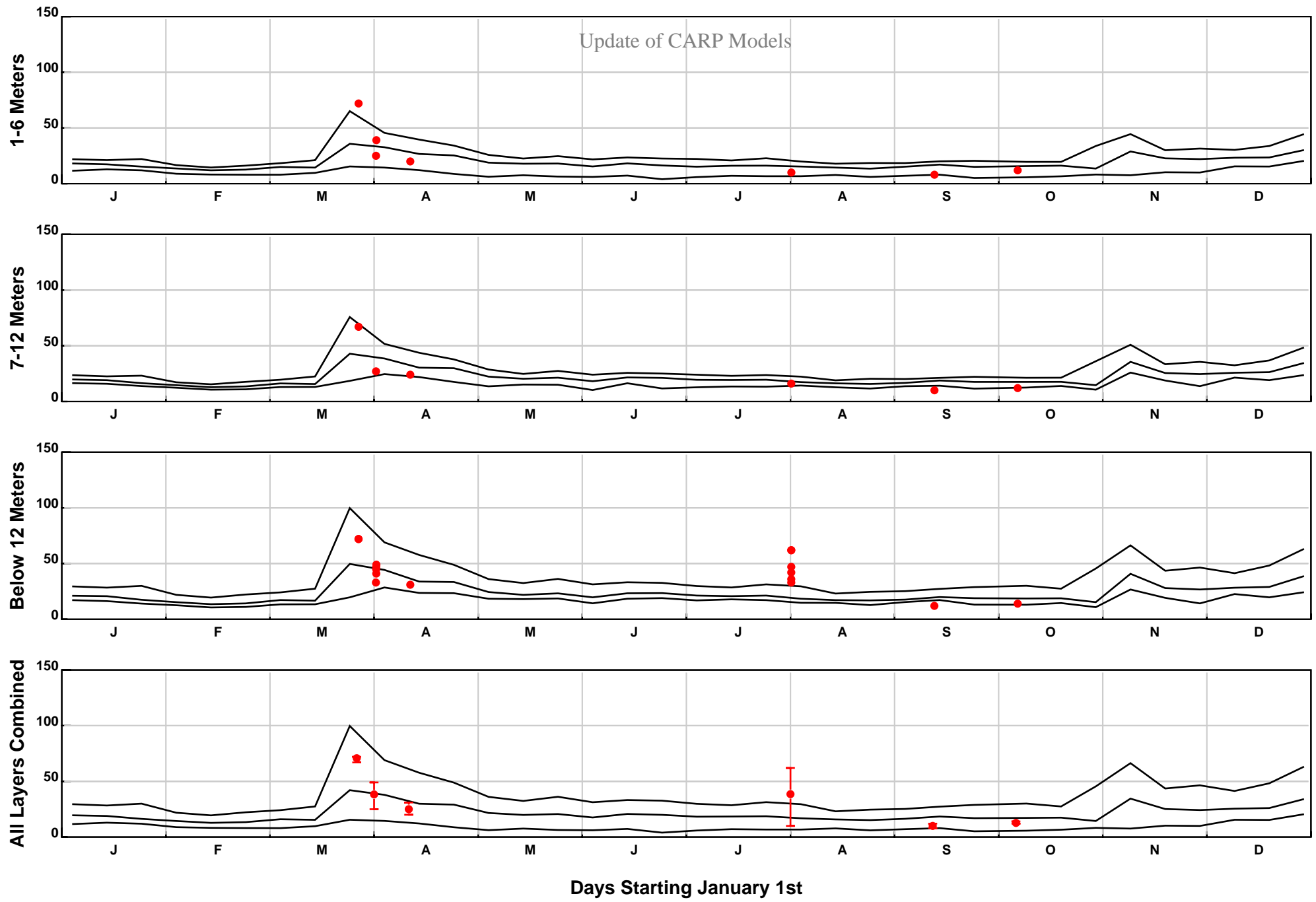
Update of CARP Models



Days Starting January 1st

ST-SWEM Suspended Sediment Concentrations (mg/L), Cell (41,178), Year 2002
Model and data comparison - suspended sediment concentrations on the Hudson River near Poughkeepsie
USGS 01372058

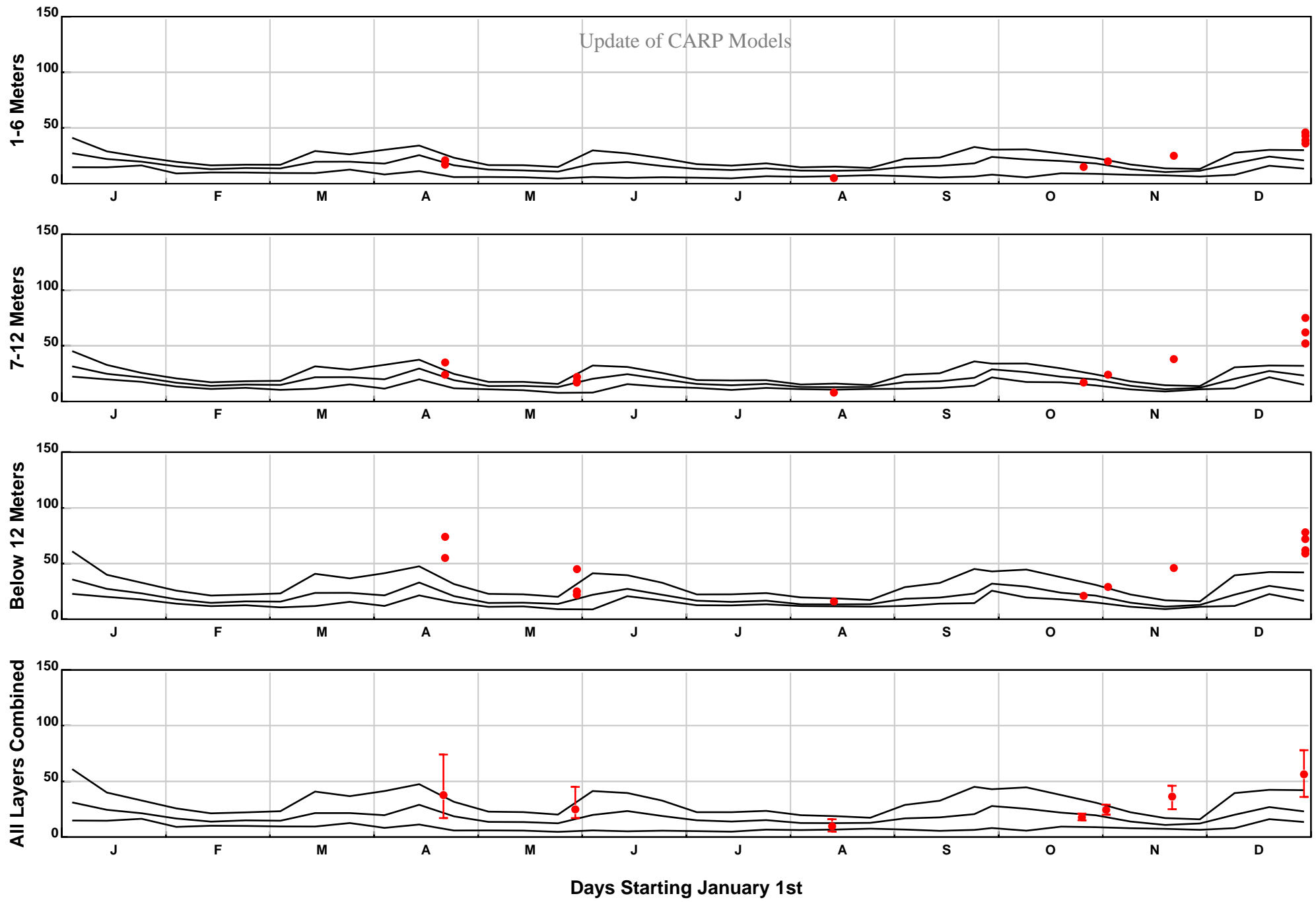
Update of CARP Models



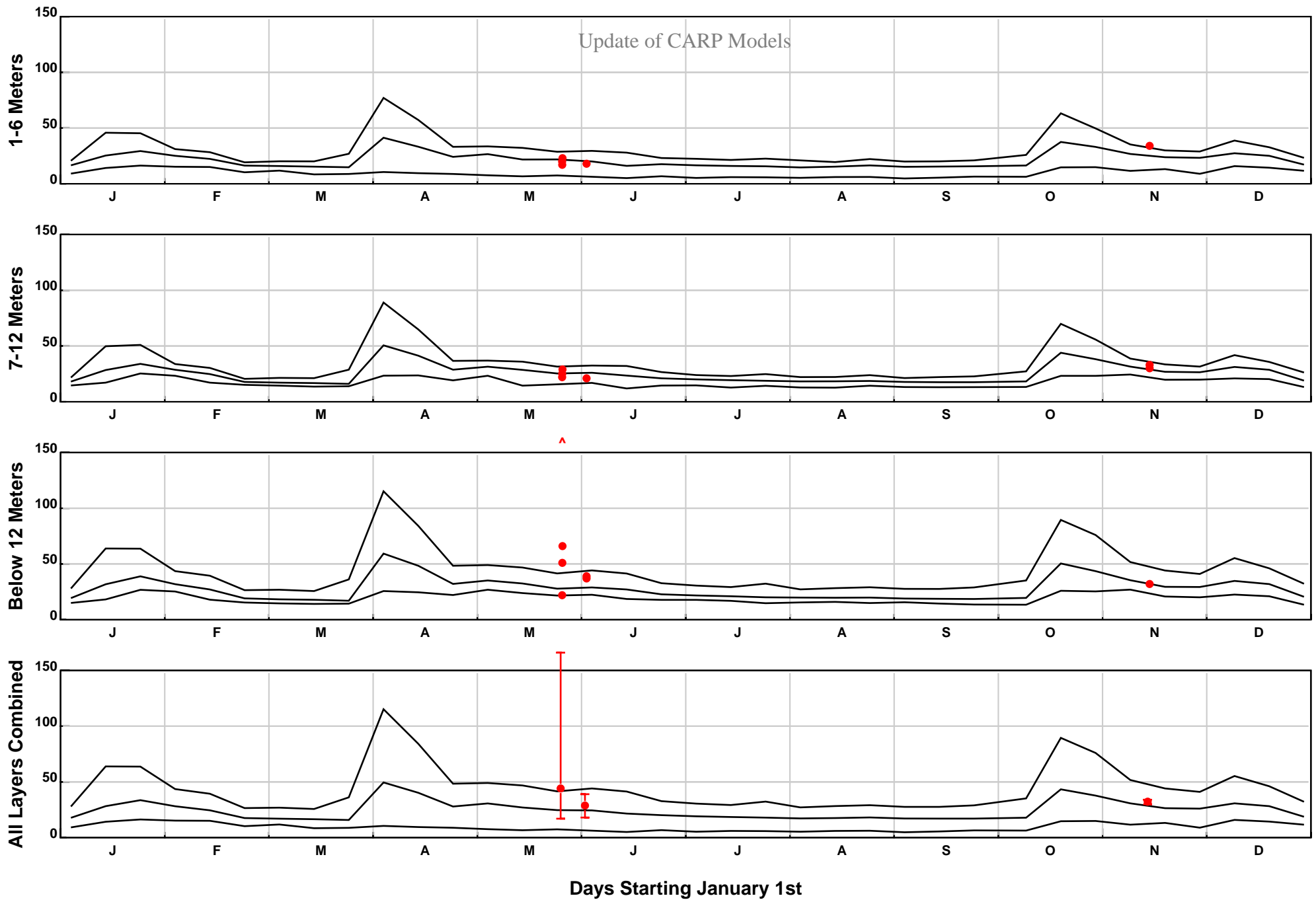
ST-SWEM Suspended Sediment Concentrations (mg/L), Cell (41,178), Year 2003
Model and data comparison - suspended sediment concentrations on the Hudson River near Poughkeepsie
USGS 01372058

Appendix 10 Page 4 of 17
RUN24

Update of CARP Models

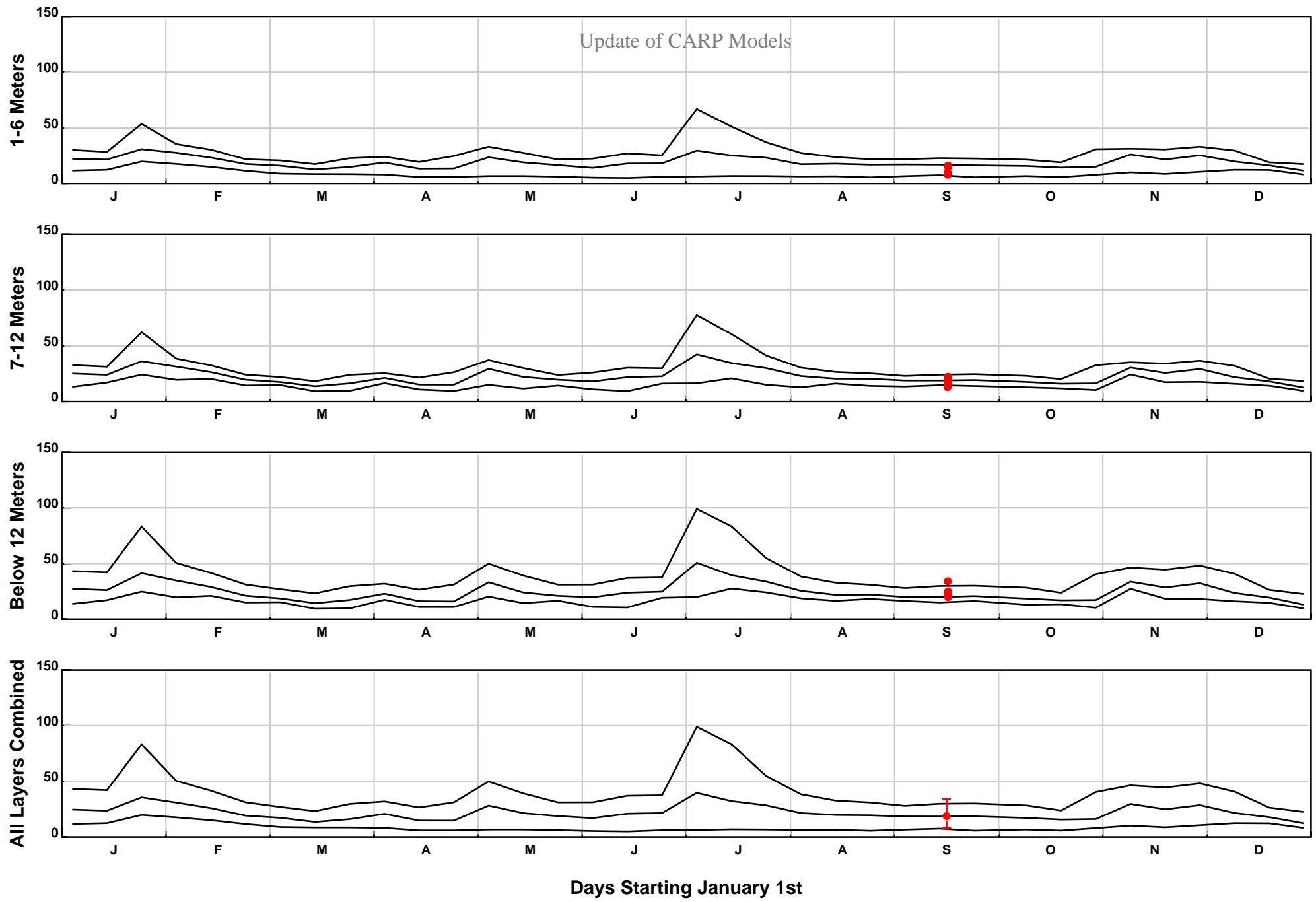


ST-SWEM Suspended Sediment Concentrations (mg/L), Cell (41,178), Year 2004
Model and data comparison - suspended sediment concentrations on the Hudson River near Poughkeepsie
USGS 01372058
Appendix 10 Page 5 of 17
RUN24



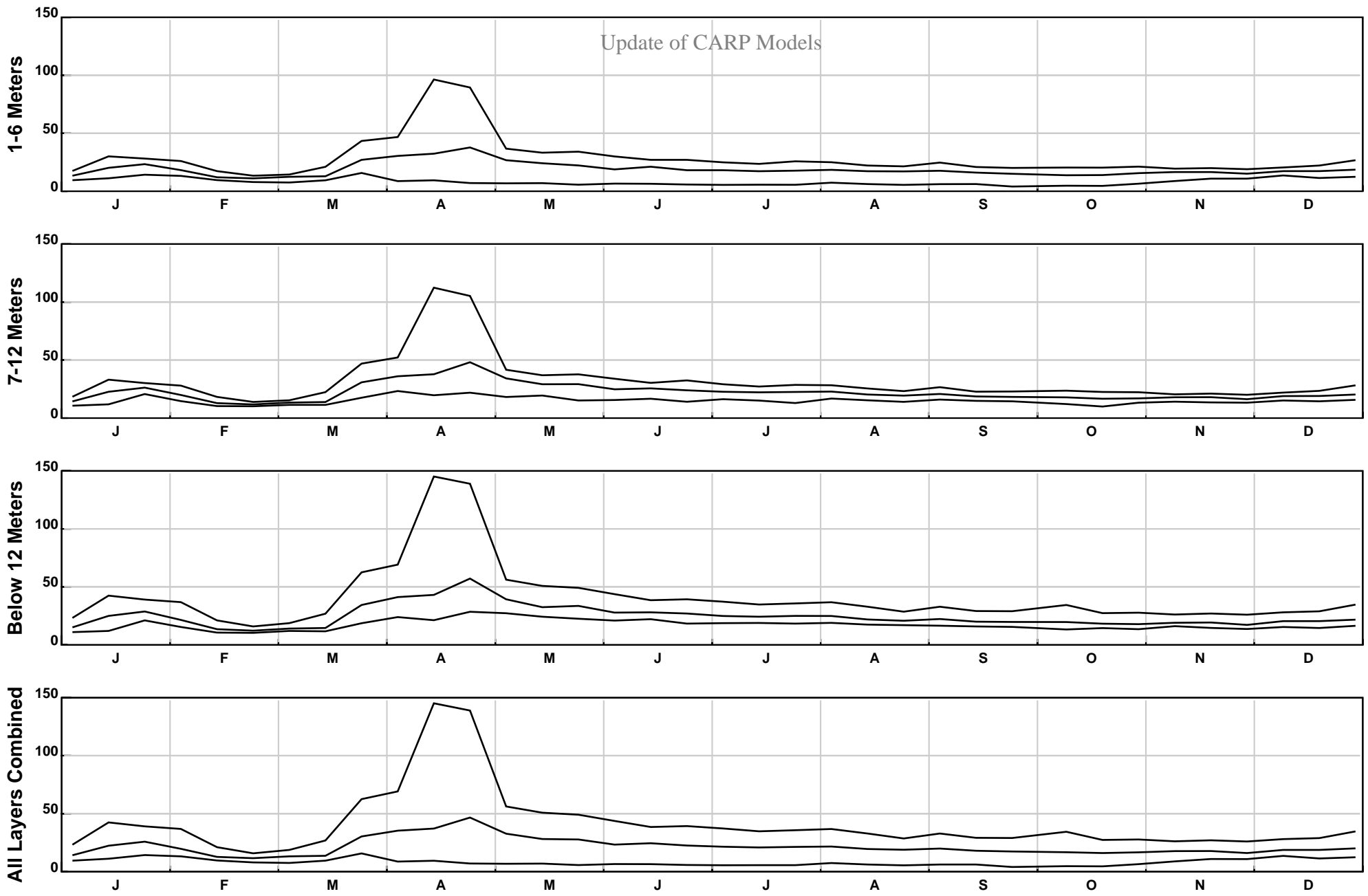
ST-SWEM Suspended Sediment Concentrations (mg/L), Cell (41,178), Year 2005
Model and data comparison - suspended sediment concentrations on the Hudson River near Poughkeepsie
USGS 01372058

Update of CARP Models



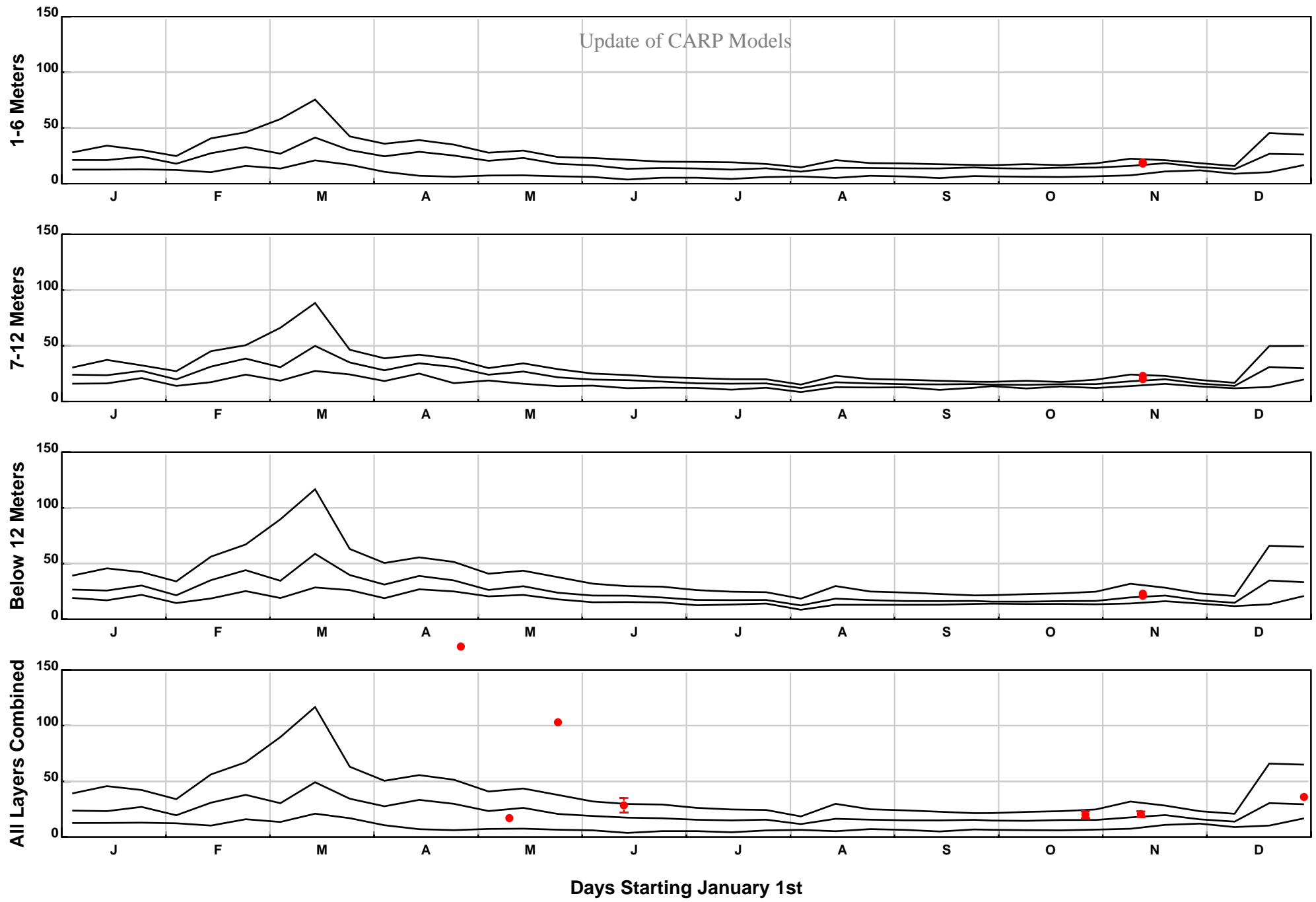
ST-SWEM Suspended Sediment Concentrations (mg/L), Cell (41,178), Year 2006
Model and data comparison - suspended sediment concentrations on the Hudson River near Poughkeepsie
USGS 01372058
Appendix 10 Page 7 of 17
RUN24

Update of CARP Models

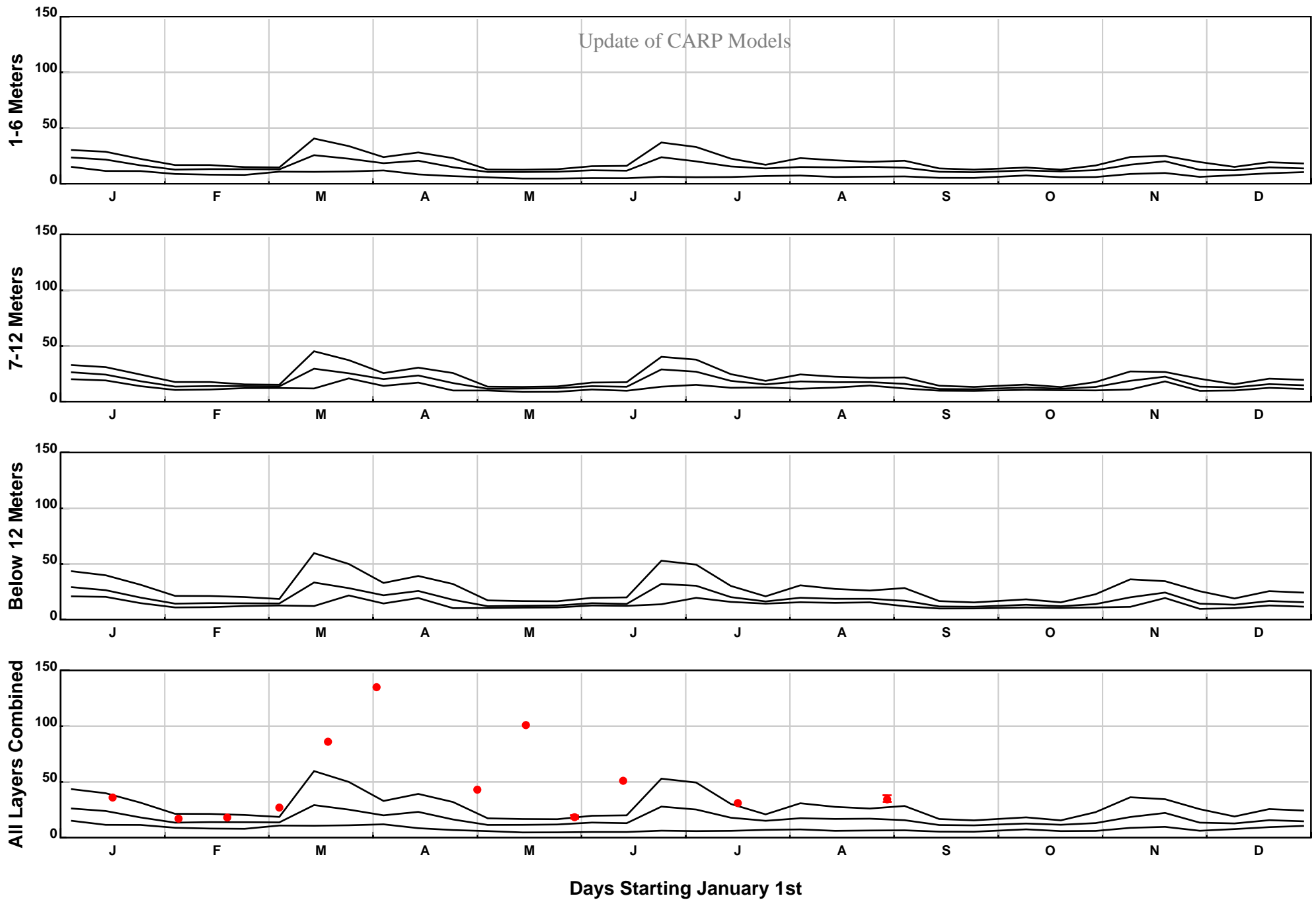


Days Starting January 1st

Update of CARP Models

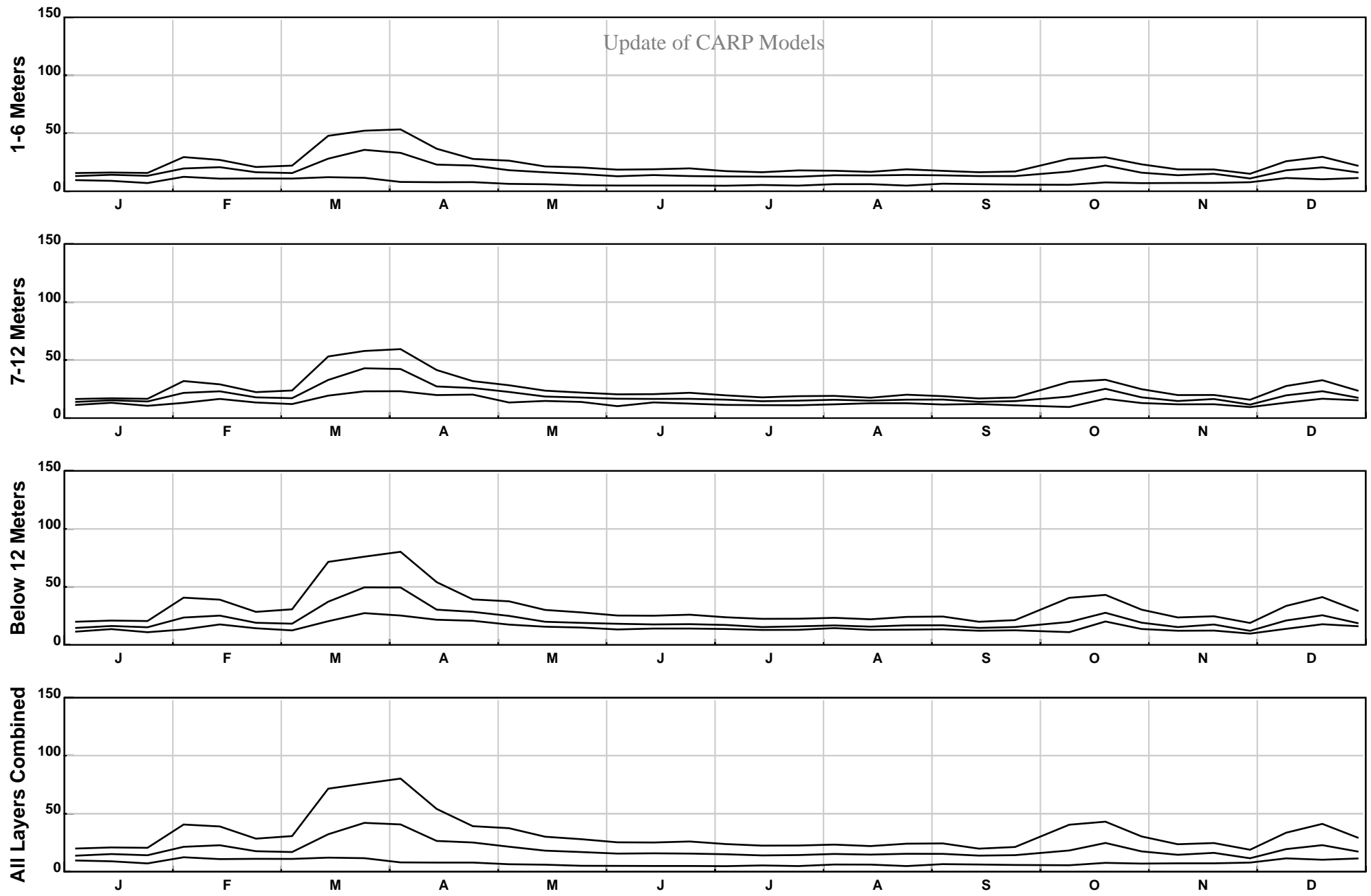


ST-SWEM Suspended Sediment Concentrations (mg/L), Cell (41,178), Year 2008
Model and data comparison - suspended sediment concentrations on the Hudson River near Poughkeepsie
USGS 01372058
Appendix 10 Page 9 of 17
RUN24

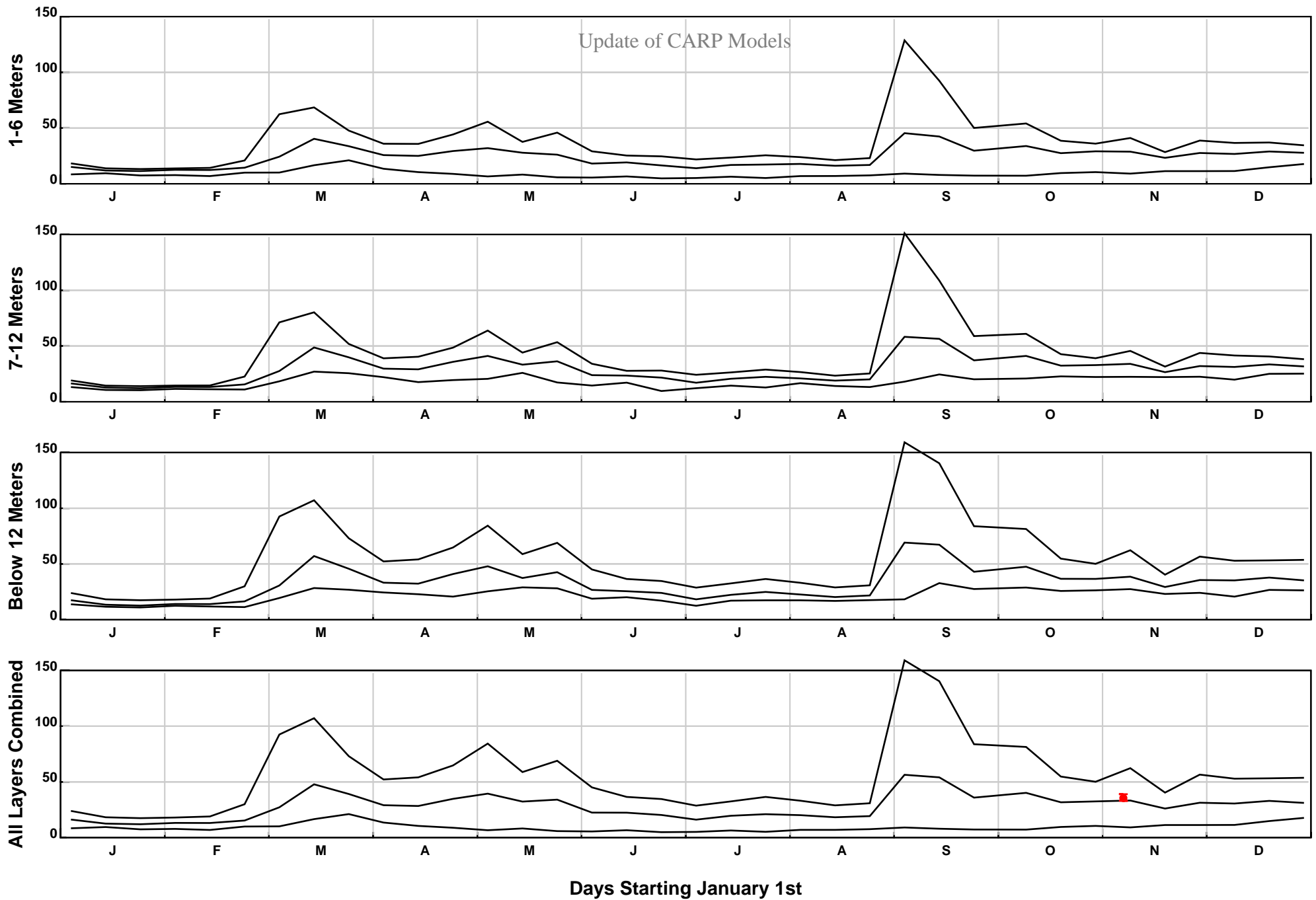


ST-SWEM Suspended Sediment Concentrations (mg/L), Cell (41,178), Year 2009
Model and data comparison - suspended sediment concentrations on the Hudson River near Poughkeepsie
USGS 01372058

Update of CARP Models

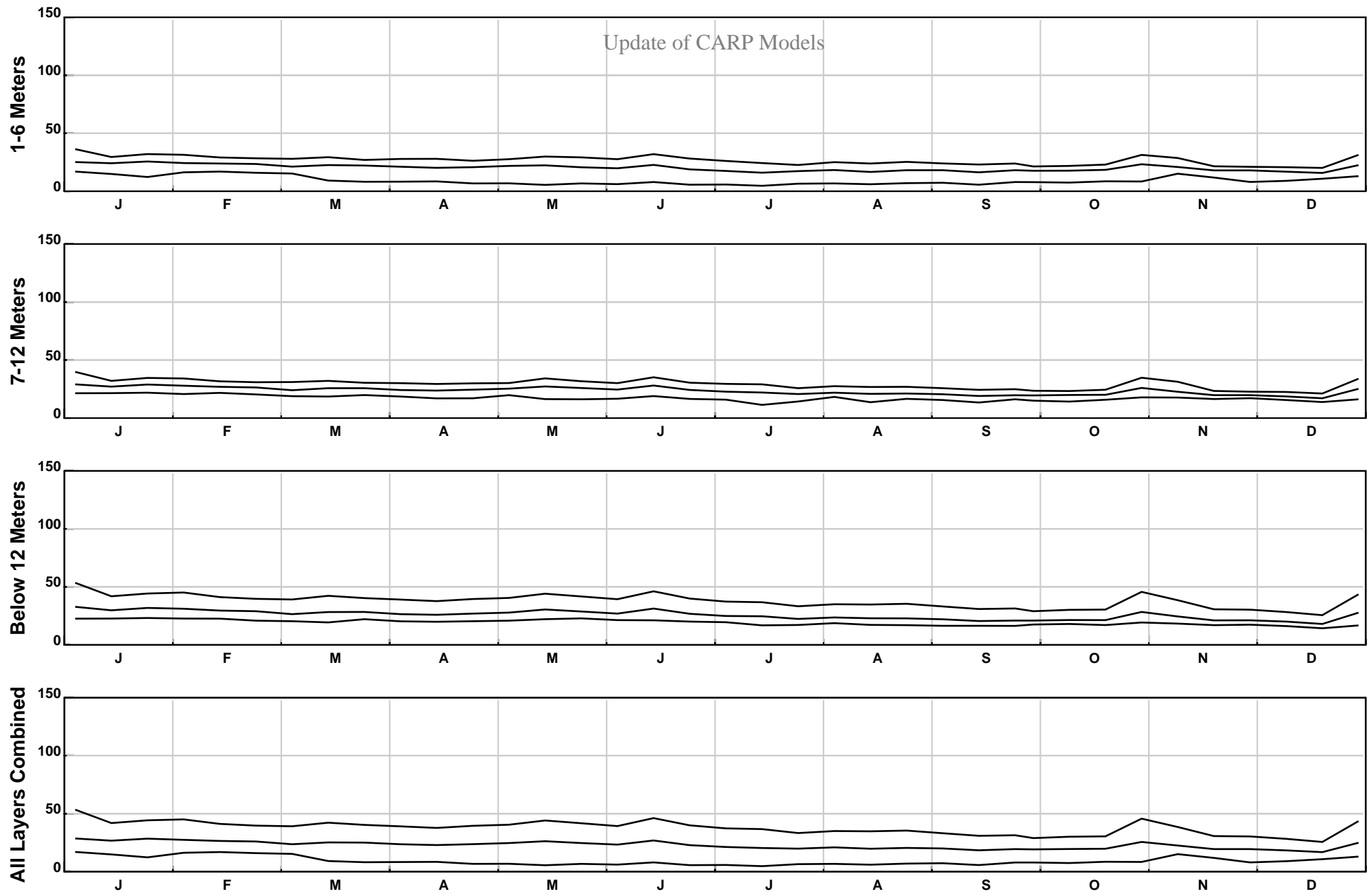


Days Starting January 1st

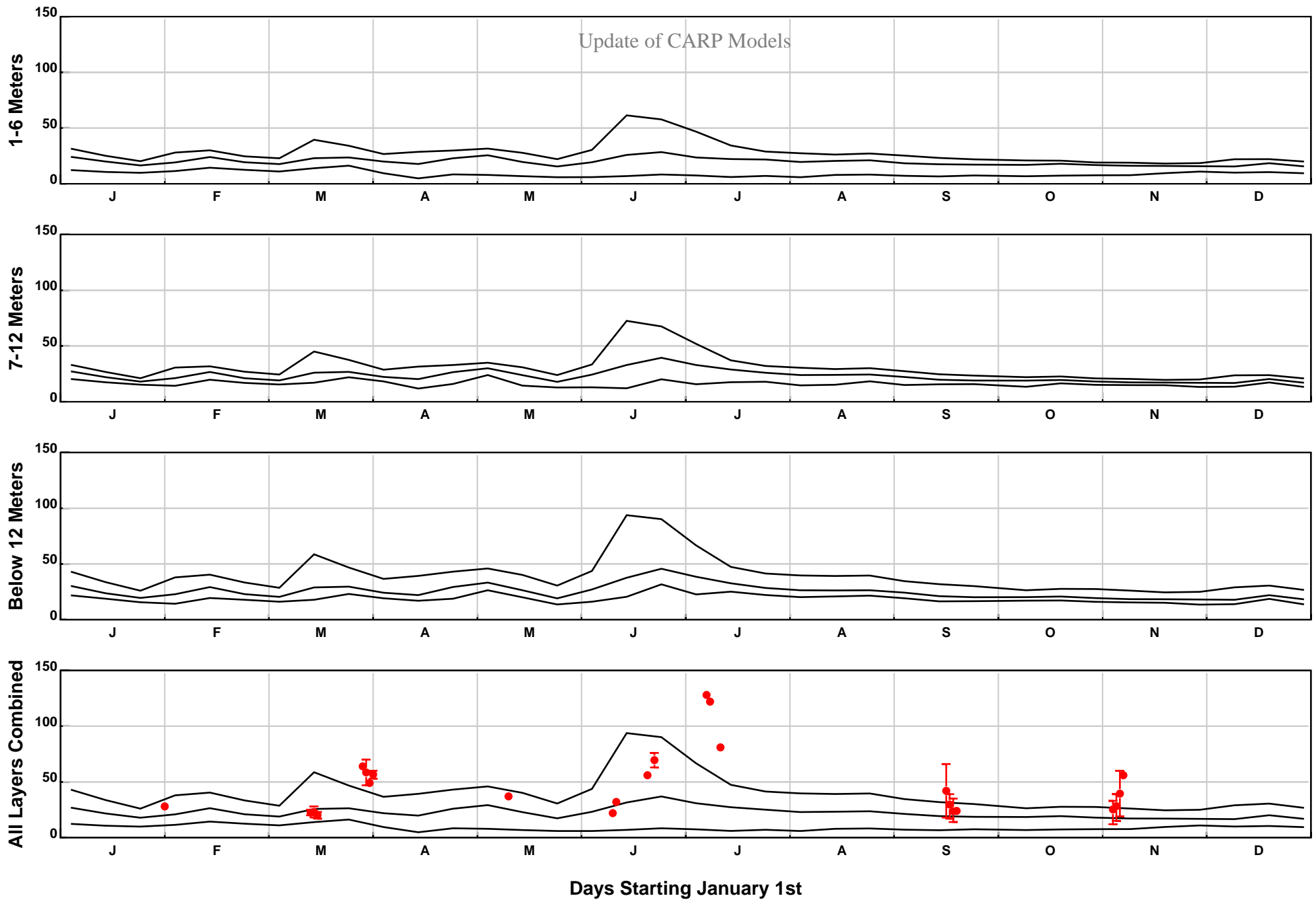


ST-SWEM Suspended Sediment Concentrations (mg/L), Cell (41,178), Year 2011
Model and data comparison - suspended sediment concentrations on the Hudson River near Poughkeepsie
USGS 01372058

Update of CARP Models

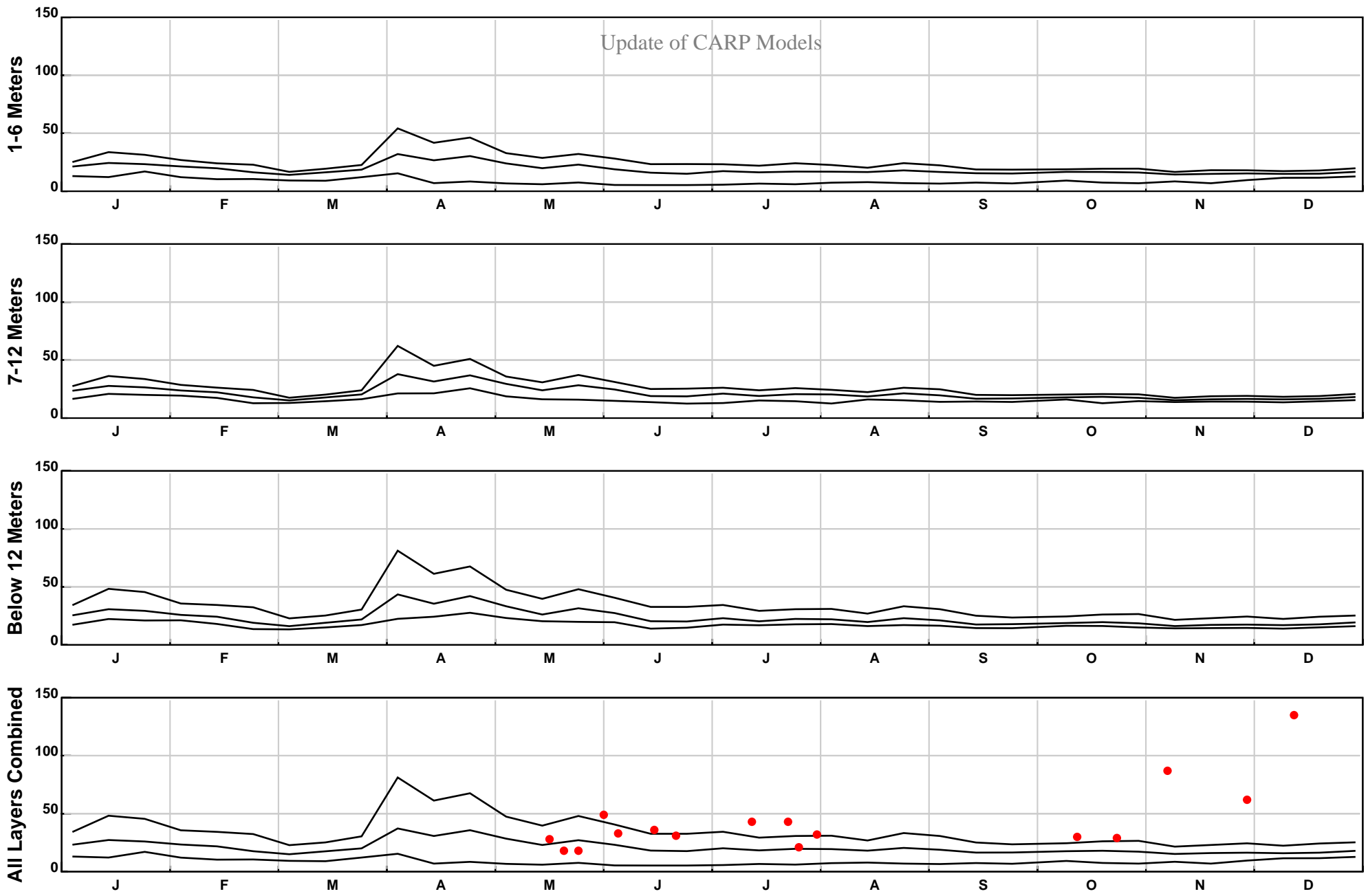


Days Starting January 1st



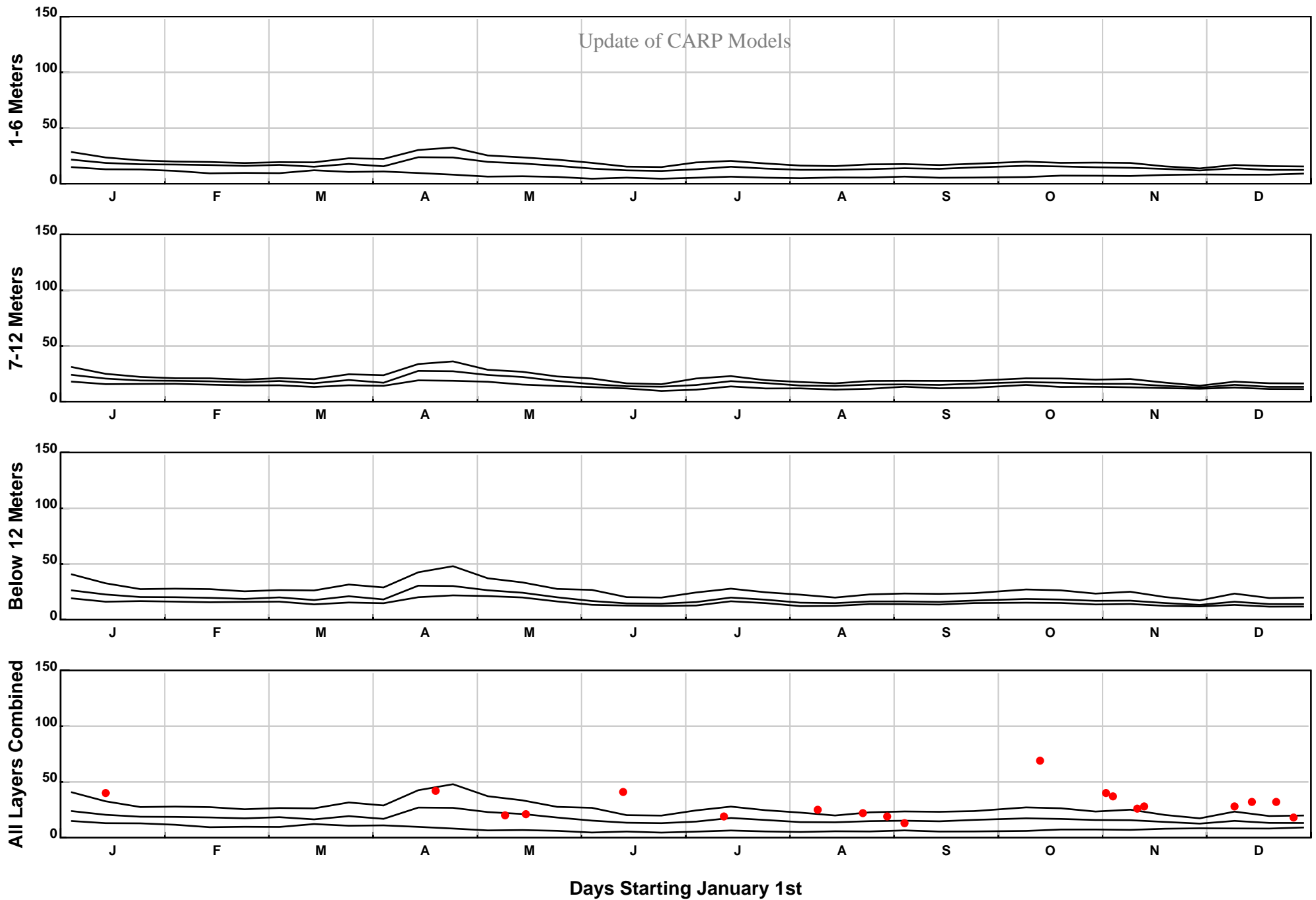
ST-SWEM Suspended Sediment Concentrations (mg/L), Cell (41,178), Year 2013
Model and data comparison - suspended sediment concentrations on the Hudson River near Poughkeepsie
USGS 01372058

Update of CARP Models



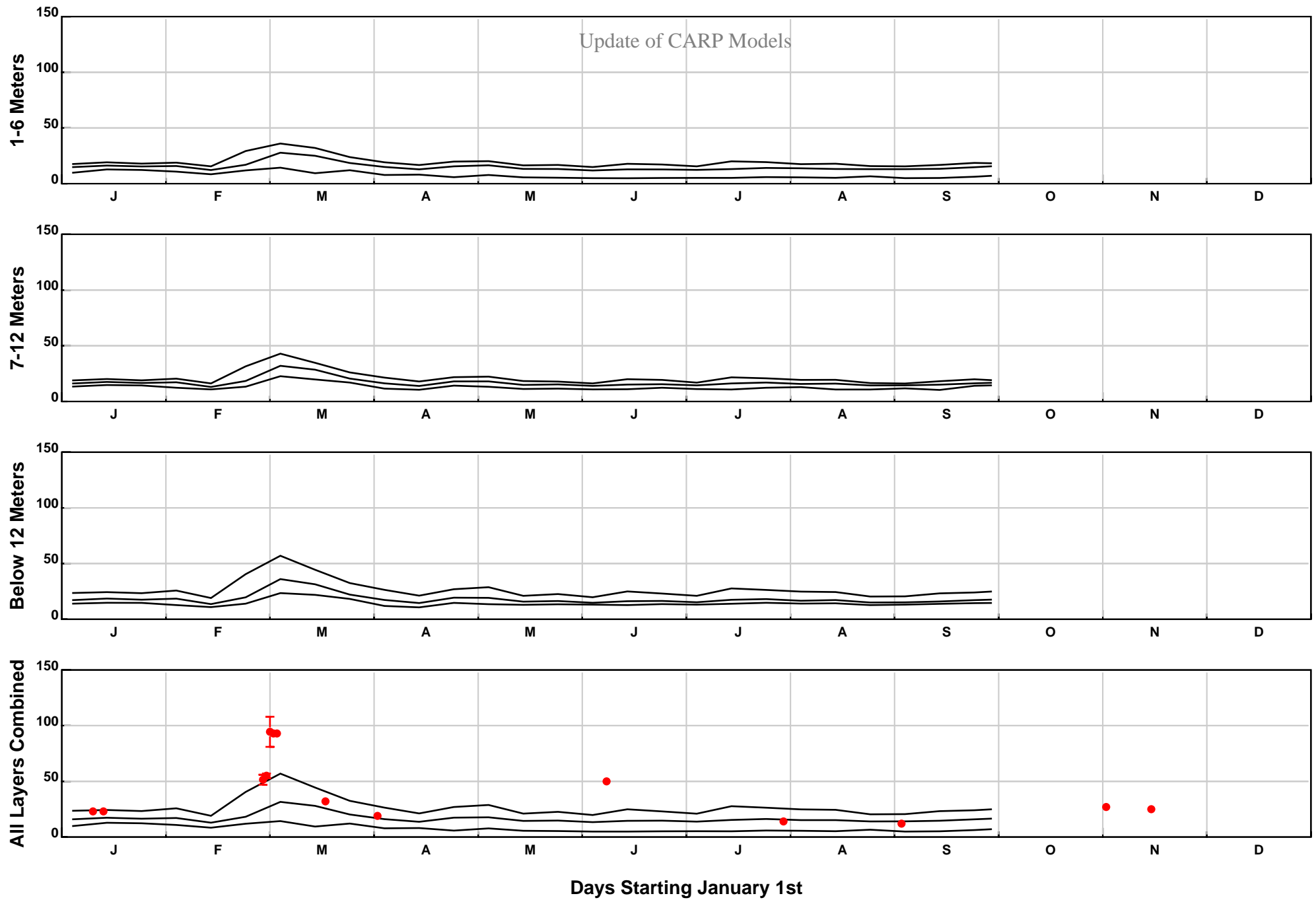
Days Starting January 1st

ST-SWEM Suspended Sediment Concentrations (mg/L), Cell (41,178), Year 2014
Model and data comparison - suspended sediment concentrations on the Hudson River near Poughkeepsie
USGS 01372058



ST-SWEM Suspended Sediment Concentrations (mg/L), Cell (41,178), Year 2015
Model and data comparison - suspended sediment concentrations on the Hudson River near Poughkeepsie
USGS 01372058

Update of CARP Models



ST-SWEM Suspended Sediment Concentrations (mg/L), Cell (41,178), Year 2016
Model and data comparison - suspended sediment concentrations on the Hudson River near Poughkeepsie
USGS 01372058

Appendix 10 Page 17 of 17
RUN24